

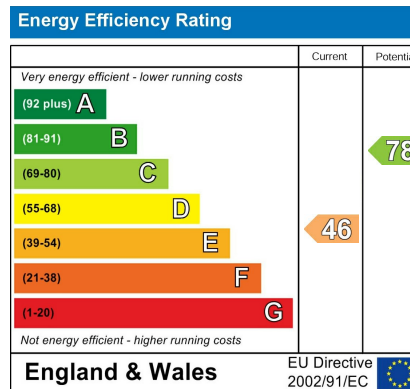
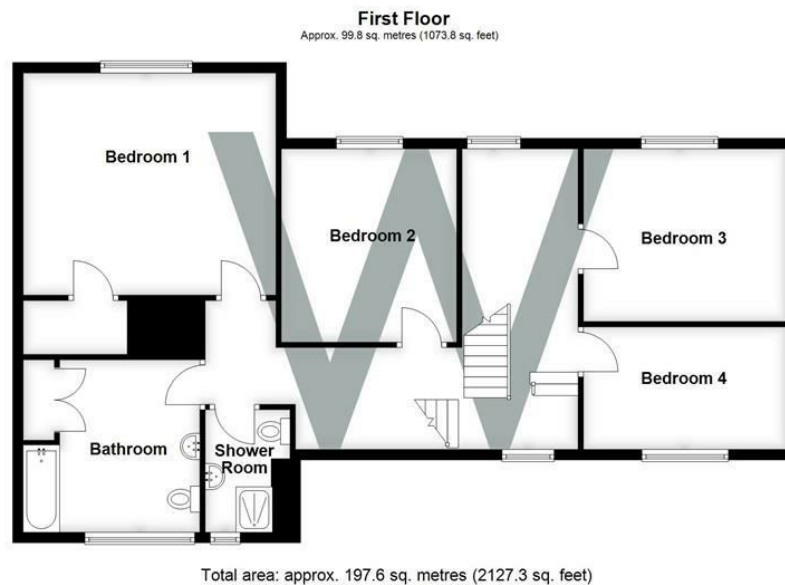
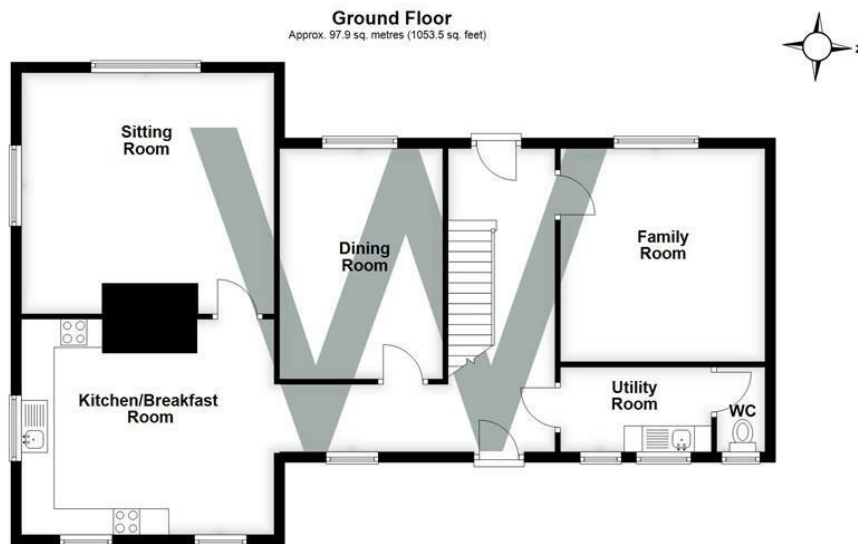


Cottage 42 Salisbury, Alderbury, Wiltshire, SP5 3DJ

£2,100 PCM

Description

A substantial family house within the park on the Longford Estate, with spacious accommodation including four bedrooms, three reception rooms and two bath/shower rooms. The property was formerly the dairy house for Home Farm but was split into two sizeable semi-detached dwellings approximately 20 years ago. It has been recently renovated with a refitted kitchen and bathrooms, re-carpeted and re-decorated throughout. The accommodation comprises a spacious rear hall leading down to the kitchen/breakfast room with a range of new high and low level units incorporating electric hob, double electric oven, space for fridge-freezer and space for dishwasher. Double aspect drawing room with new woodburning stove. Separate dining room, utility room with sink and spaces for washing machine and tumble dryer. Cloakroom. Front hall with a further reception room/snug and an ornate staircase going up to a split-level first floor. At one end there are two double bedrooms, the main bedroom having a walk-in cupboard, serviced by a family bathroom with thermostatic shower over bath with glass screen as well as a separate shower room with another thermostatic shower within a cubicle. At the other end there is another double bedroom and one large single bedroom. Outside, the property is approached via a small lane off the Alderbury/Downton road to a parking area, still under construction. There is a large garden wrapping the three sides of the property comprising mainly lawn with some established flowerbeds, trees and a brick shed/outbuilding near the back door. Two garages come with the property within a block of four, detached from the main curtilage. Heating via an oil-fired external boiler running radiators and pressurised hot water system. The property is available UNFURNISHED on a potentially long-term basis, hence one year minimum term.



WHITES
Castle Chambers, 47 Castle Street,
Salisbury, Wiltshire, SP1 3SP
01722 336422
www.hwwhite.co.uk
residential-sales@hwwhite.co.uk

